

# APPLYING FOR ACCOMMODATION

## VICTORIA & CANBERRA

### 4 SIMPLE STEPS

- Step 1** Work out what type of accommodation you would like to apply for.
- Step 2** Make a list of the options you are interested in and then request information from the accommodation sources.
- Step 3** Ring the Housing Service and speak to them directly about your options. Visit the accommodation if you can.
- Step 4** Check with the individual accommodation sources to find out application processes and dates - these will vary between institutions.

### TYPES OF ACCOMMODATION

#### On campus

This option includes colleges, halls, villages, studio apartments etc. The accommodation can be owned and operated by the university or through a private company.

Students usually have access to resources such as computer/Internet, library, gym, sports facilities, tutors etc.

Residences are usually very close to the institute or on the campus and can be fully catered, self-catered or a combination of both.

You may have to pay an application fee, which is often non-refundable if you don't secure a place.

You usually pay for a 42 - 52 week contract.

Application dates for accommodation vary. Some open from early August and others require you to wait until you have received an offer for a place in your course.

You need to apply once applications open and you may need references or a recommendation from your school.

#### Private rent/board

Private rentals can be difficult to find and expensive in large cities. Often students will go into shared accommodation to reduce costs.

Students will be signed to a lease of 52 weeks compared to 40 - 42 weeks for university and there will be start up and ongoing costs including utilities.

If you are lucky enough to have friends, family or relatives living in the area you will be studying, you may be able to board with them.

#### Commercial accommodation

These accommodation institutions are generally independent from universities and TAFE Institutes. Prices and access to resources can vary.

They often have communal self-catering kitchens. Prices vary.



# ACCOMMODATION - VICTORIA

Rates are approximate, based on a full year, and may rise for the 2020 intake.

## VICTORIA UNIVERSITY

- Website and links to online application portals - <https://bit.ly/2BHyEpk>
- Option 1: UniLodge@VU: \$169 - \$359 p/w.
- Option 2: Housing Database, shared housing, <https://vu.studystays.com.au/>

## MONASH UNIVERSITY

- Website and links to online application portal - <http://bit.ly/2bvTyQ7>
- Accommodation available at Clayton, Berwick, Peninsula and City campuses.
- Contracts vary between 42 - 52 weeks. Cost varies between \$240 - \$305 p/w
- Free to apply and first in first served.
- Mannix College - \$22,330 (39 weeks), <https://bit.ly/2YluNrG>
- Off campus options - <https://bit.ly/2BUI2rL>

## AUSTRALIAN CATHOLIC UNIVERSITY

- Melbourne: Iglu Melbourne City (\$369 - 494 p/w) and St Mary's College, University of Melbourne (2019 - \$26,770 p/y), <https://bit.ly/339IxMF>
- Ballarat: Two options - Managed Student Residences and Camillus Residence, \$170 - \$200 p/w, <https://bit.ly/2T686s2>

## FEDERATION UNIVERSITY

- Website and links to online application portal - <http://bit.ly/2blGHMi>
- Ballarat: \$165 - \$290 p/w. Gippsland: \$170 - \$205 p/w. Berwick: \$226 - \$244 p/w

## DEAKIN UNIVERSITY

- Website and links to online application portal - <http://bit.ly/1ewrPLa>
- Melbourne: \$285 - \$345 p/w. Geelong (Waurin Ponds) - \$236 p/w. Geelong (Waterfront): \$303 p/w. Warrnambool: 40 week lease - \$212 p/w.
- Deakin Houseme: off campus share housing - <https://bit.ly/2GxufeE>

## SWINBURNE UNIVERSITY

- Website and links to online application portal - <http://bit.ly/1hrZx7f>
- Can apply for a single room in the College, single room in a Studio Apartment, or a room in a shared apartment. College: \$325 p/w. Single studio - \$344 - \$384. Apartments: \$265 - \$301 p/w.
- UniLodge Vivida- privately owned student accommodation located next to the Hawthorn campus. 12-month lease. \$305 - \$340 p/w, <http://bit.ly/1NAN8tM>
- Off-campus options - <https://bit.ly/2OsH4L6>

## RMIT

- Accommodation website - <https://bit.ly/2rj855m>
- Bundoora campus - Walert House. \$210 - \$226 p/w, <https://bit.ly/2vvFGMC>
- City and Brunswick campuses - no on campus options. Nearby purpose built student residences and hostels - <https://bit.ly/2lv0zz7>

# ACCOMMODATION - VICTORIA

## MELBOURNE UNIVERSITY

Rates are approximate, based on a full year, and may rise for the 2020 intake.

- Option 1: Residential Colleges. 11 options. Over \$20 000 p/y, <http://bit.ly/2arCVCG>
- Option 2: University Accommodation options. \$301 - \$475 p/w, <https://bit.ly/2TxkWQd>
- Option 3: Off-campus options - <https://bit.ly/2IfYGsl>

## LA TROBE UNIVERSITY

- Website, contact information and links to online application portal - <http://bit.ly/1KDNDnk>
- Melbourne: Colleges and apartments. \$147 - \$245 p/w.
- Bendigo: \$189 - \$301 p/w.
- Regional campuses: <https://bit.ly/2ARNQSB>
- Off campus options: <https://bit.ly/2MnR05R>

# ACCOMMODATION - CANBERRA

## AUSTRALIA NATIONAL UNIVERSITY

Rates are approximate, based on a full year, and may rise for the 2020 intake.

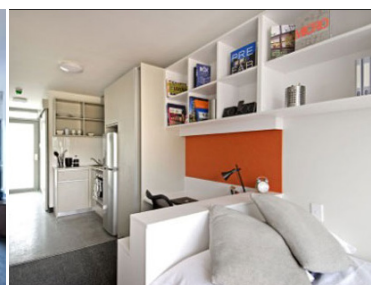
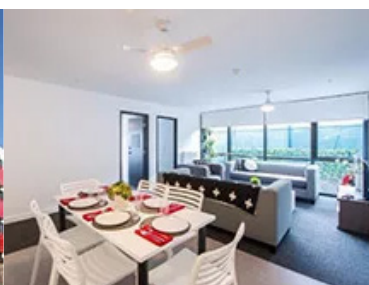
- Website, contact information and links to online application portal - <https://bit.ly/2mkPok5>
- Colleges, Halls and Lodges. Catered and non-catered options. - \$227 - \$428 p/w.

## UNIVERSITY OF CANBERRA

- Website, contact information and links to online application portal - <http://bit.ly/2bCZUdo>
- Cooper Lodge, Weeden Lodge, UC Lodge and the University of Canberra Village. From 140 - \$368p/w (2019 rates).

## AUSTRALIAN CATHOLIC UNIVERSITY

- Website, contact information and links to online application portal - [www.acu.edu.au/](http://www.acu.edu.au/)
- Managed residences - \$265 - \$290 p/w.
- Off-campus options, <https://bit.ly/2ltR03m>
- Canberra Student Housing Co-op, \$155 p/w, [www.csh.coop](http://www.csh.coop)



# MELBOURNE BASED ACCOMMODATION

## UniLodge

Multiple locations across Melbourne area. Some residences have meals. Cost varies depending on unit type and location.

<http://bit.ly/2bN83zk>

## Home at Flinders

Flinders Street, Melbourne. Can choose furnished or unfurnished. \$320+ p/w. 52 week lease.

[www.homeat.com.au/](http://www.homeat.com.au/)

## Kew Student Residence

25 Mary Street, Kew. On site student support and resident managers. Approximately \$13,247 for the year. Price includes four meals per day and partially furnished room. Accommodation is twin share with shared bathroom.

<http://bit.ly/2bQxqxP>

## Le Student 8

\$280 - \$350+ per week (includes utilities) depending on the type of accommodation. Studio rooms located at 'Bell City', Preston.

[www.lestudent8.com/](http://www.lestudent8.com/)

## Birch Ridge Student Residences

Includes Hawthorn House, O'Connell Residence and Riverdale Residence. From \$240 per week.

<http://bit.ly/1QanTRf>

## Brunswick Uniting Church Student Housing

Shared housing. For people of various faiths/beliefs. No catering but shared kitchen available. Rent is about \$400 per month plus expenses.

<http://bit.ly/2uYbEk7>

## Student Housing Australia

This is a student housing database.

- Go to <http://sha.com.au/>
- Select the TAFE/University you would like to attend.
- All student housing near the institution will appear including private rentals and student apartments.

## RMIT Student Village

75% of places are set aside for RMIT students, but students studying at any institution can apply for a place. One, two, three and five bedroom apartments/studios. \$290 - \$610 p/w. Self catered, pool, gym, BBQ, student lounge etc.

<http://bit.ly/1OPCApO>

## Yarra House

Located at the Melbourne Polytechnic Fairfield Campus. \$204- \$312 p/w (includes utilities). Self catered. Can apply for a friend to share with you. Communal kitchens or use the Melbourne Polytechnic Cafe.

<http://bit.ly/2b0Zg7Y>

## Urbanest

Three properties at Carlton and Central Melbourne. Fully furnished studio apartments, single and twin share. Self catered. From \$315 p/w  
<http://bit.ly/21J76ZJ>

## Carlton Student Accommodation

Three locations- Gratton, Cardigan and Drummond Streets. Between \$245 - \$290 p/w depending on length of contract. Furnished rooms. Self catered, free to apply, 22+, 44+, and 52+ week contracts.  
<http://bit.ly/1m6Hfug>

## Metro Student Accommodation

Plenty Road, Reservoir, Melbourne. Close to trams and buses. Self catered, single rooms, communal kitchens and common rooms.  
<http://bit.ly/2clJ5ld>

## Carlton Melbourne Colleges

Swanston Street, Carlton. Single rooms, twin share and rooms with bathrooms. Cost between \$188 - \$353 depending on room and length of contract (44 or 52 weeks). Self catered.  
<http://bit.ly/1R4SbVZ>

## The Student Housing Company

Located in Melbourne and Carlton. Park Avenue - \$299+, University Avenue - \$299+, Infinity Place - \$419+. Fully furnished and rent is inclusive off utilities.  
<https://bit.ly/2odp2C7>